

Developers:



PREM SHANTI
DEVELOPERS

SITE:

'SEVEN SKY',
Bh. Saibaba Temple, Nr. Jupiter Char Rasta,
Manjalpur, Vadodara.

CALL:

+91 74338 86565
+91 74338 86060

EMAIL:

premshantidevelopers@gmail.com

ARCHITECT



STRUCTURE

ASHOK SHAH
& ASSOCIATES

a project by...



PREM SHANTI
DEVELOPERS

SEVEN
SKY
SHOPS & 2-BHK PREMIUM FLATS

SHOPS & 2-BHK FLATS



FEEL ON
SEVENTH HEAVEN

Seven Sky is a meticulously planned 2BHK apartment offering with retail spaces at the bottom floor that give you utmost luxury, comfort and convenience, making you feel like you're living on the seventh heaven.

SEVEN
SKY
SHOPS & 2-BHK PREMIUM FLATS

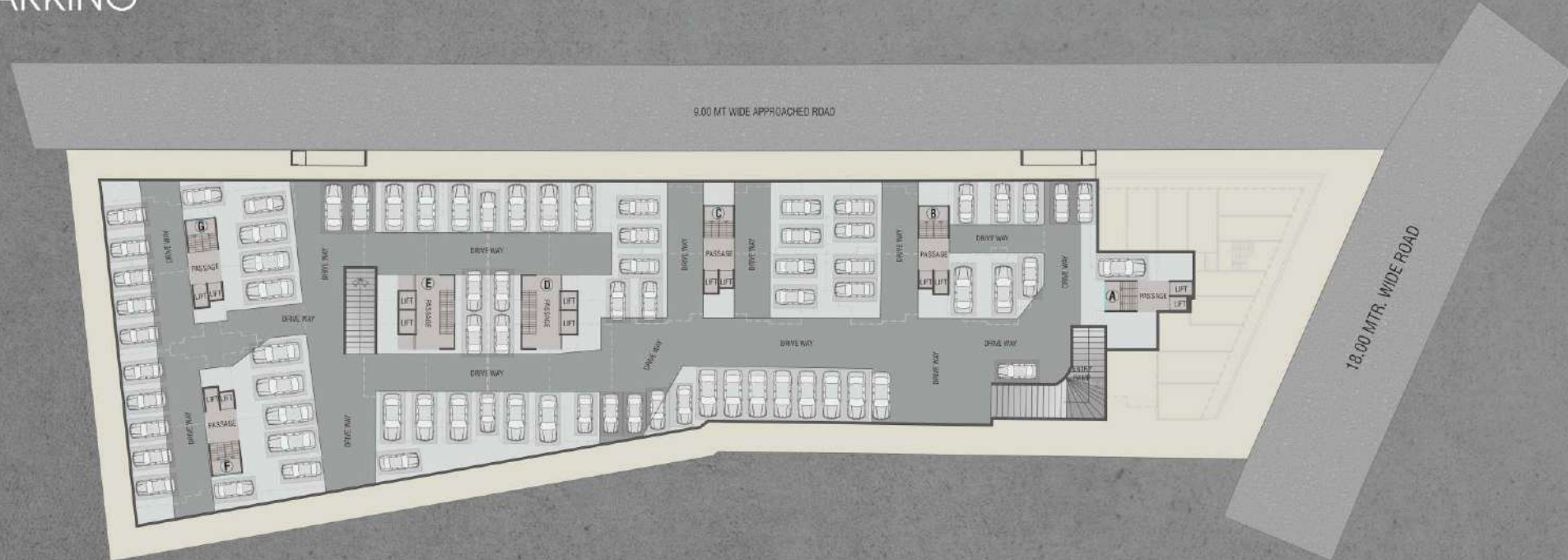


A WORLD
WELL-CONNECTED

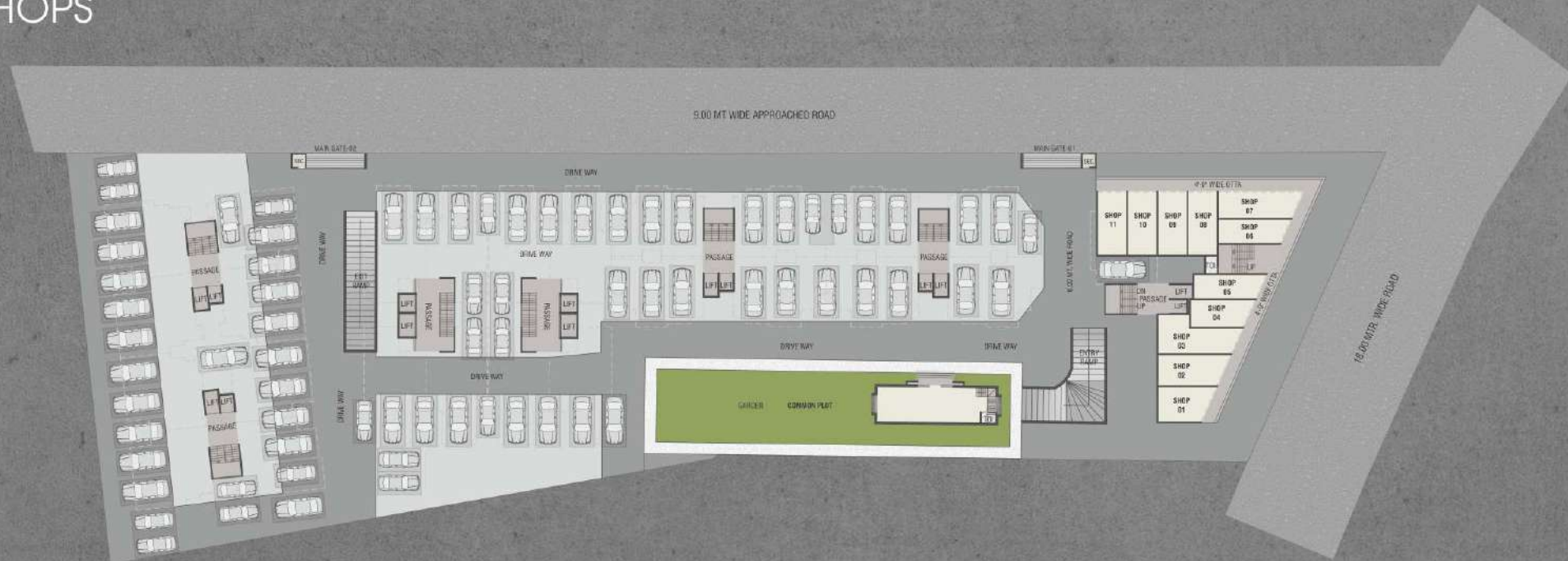
Here, at Seven Sky, you get a home that is well-planned and well-connected with the world around you and with nature.



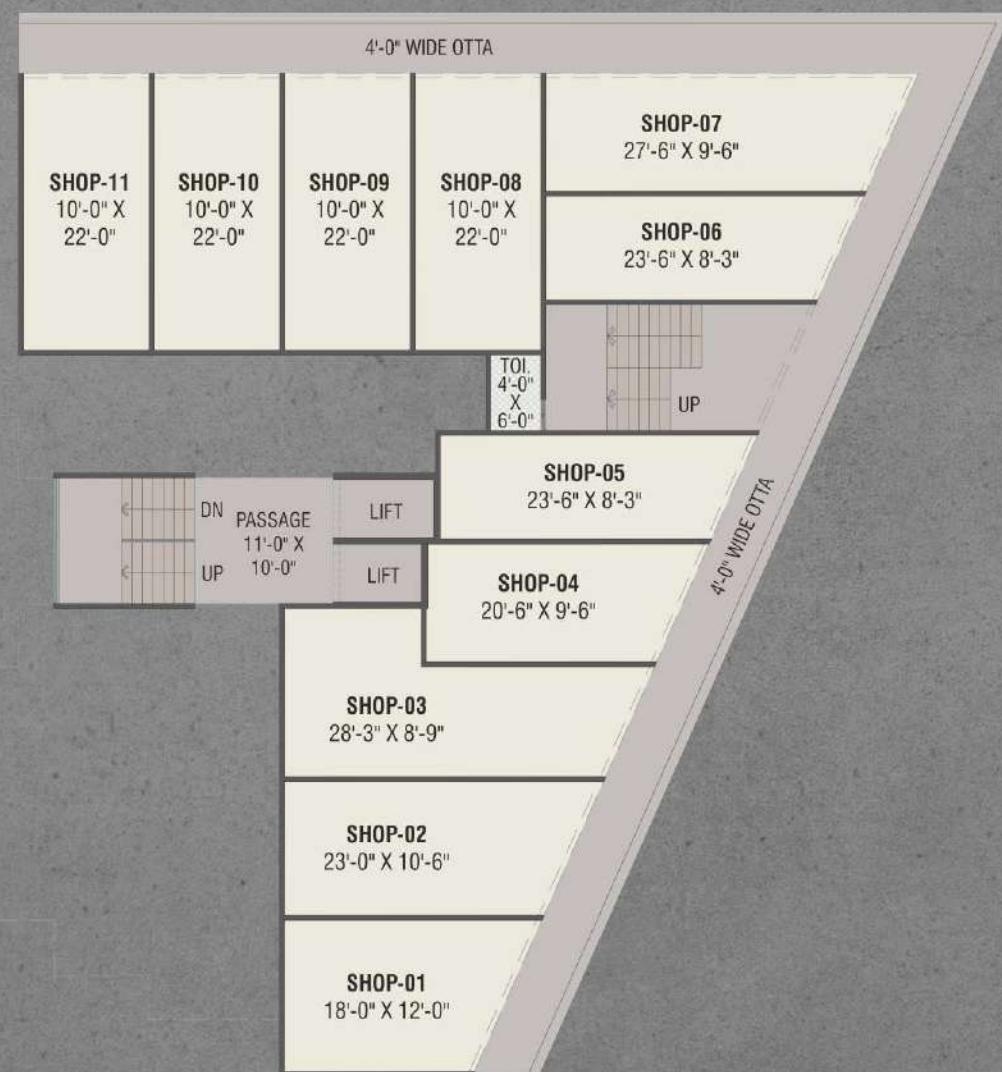
BASEMENT FLOOR PLAN / PARKING



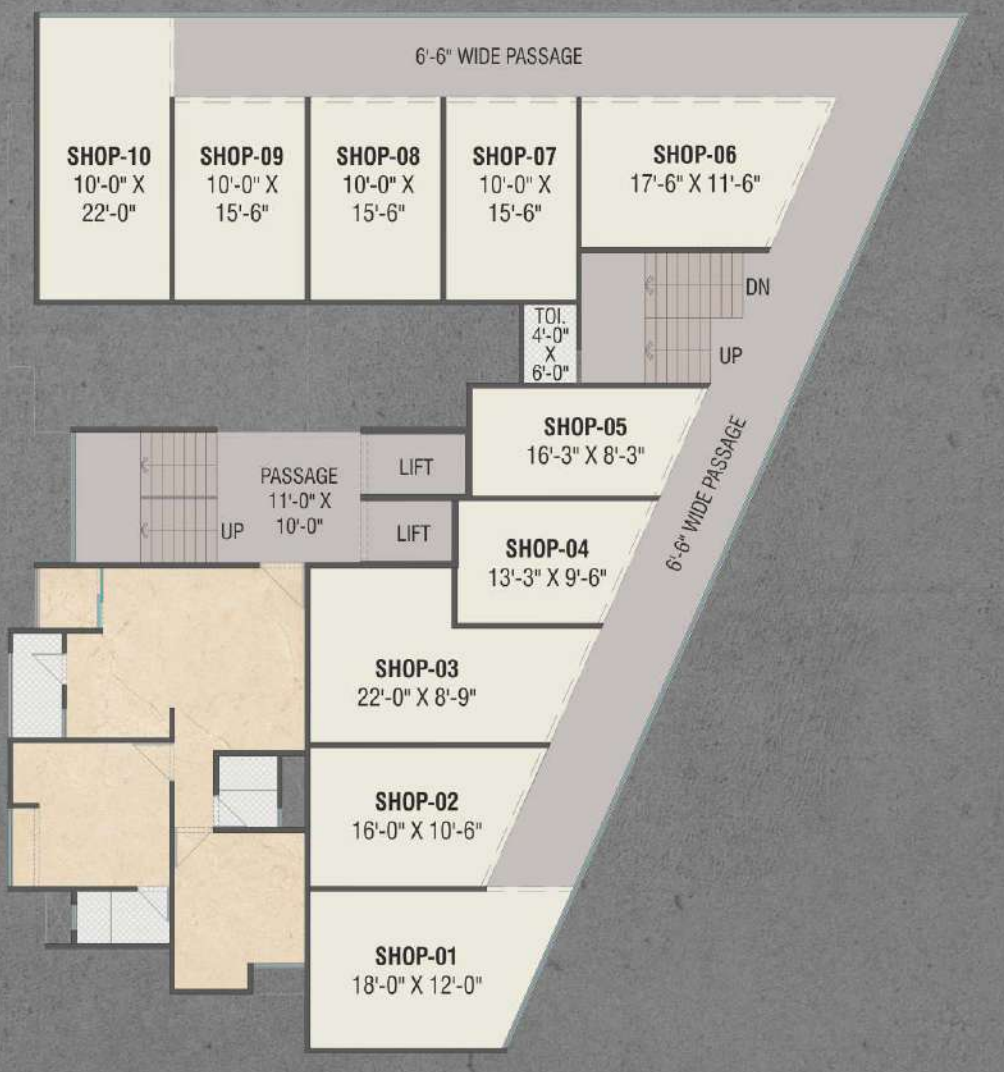
GROUND FLOOR PLAN / SHOPS



GROUND FLOOR / SHOPS



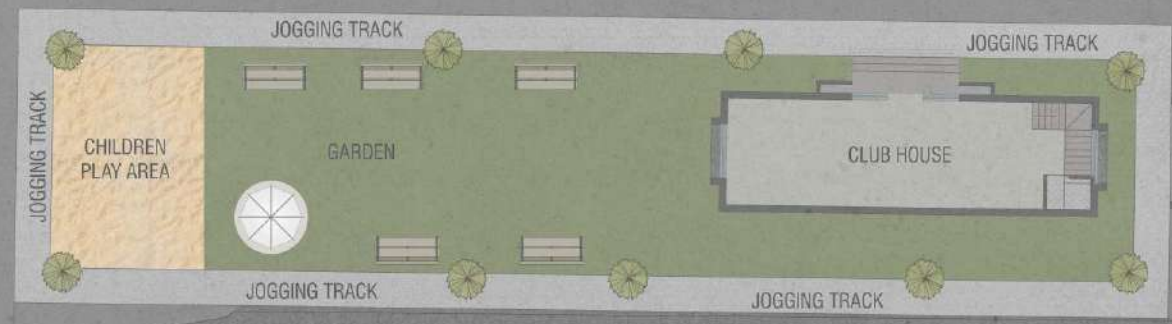
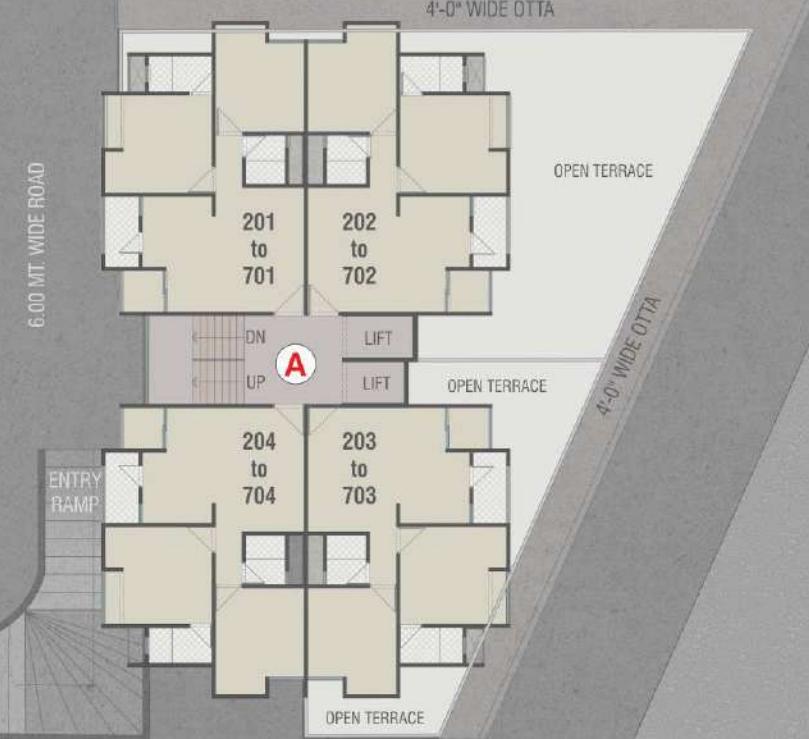
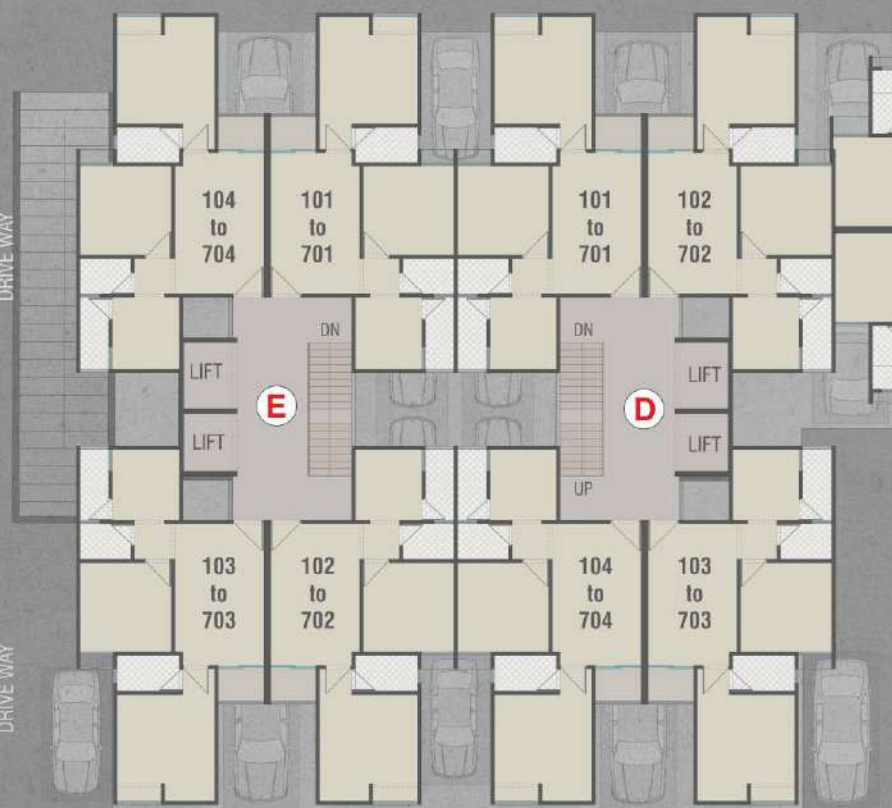
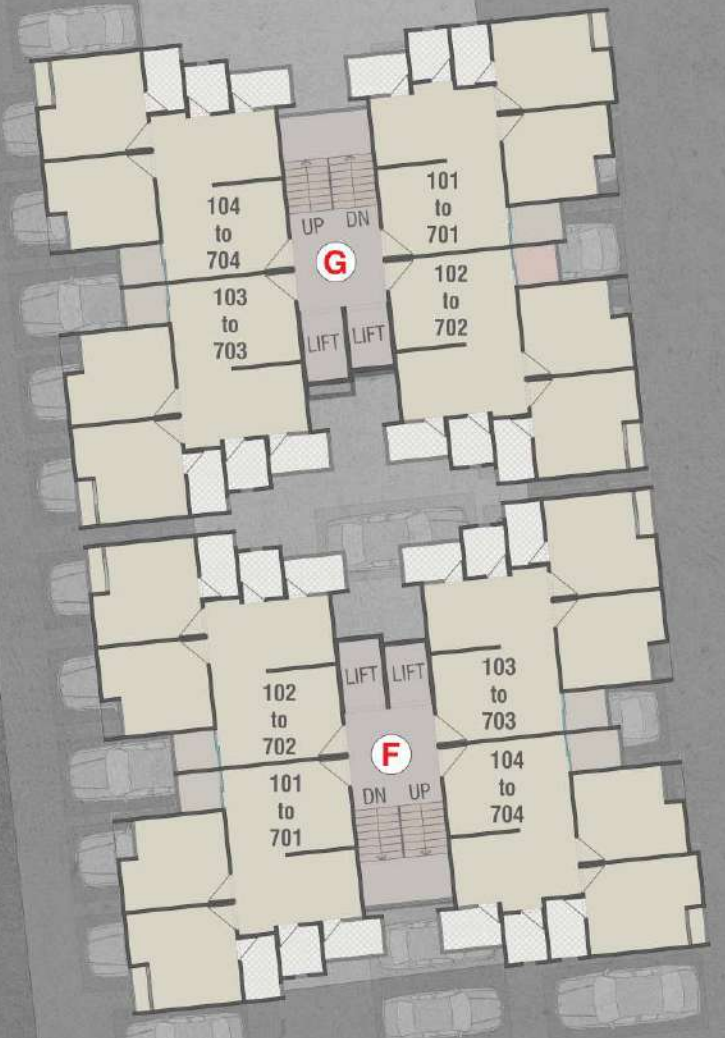
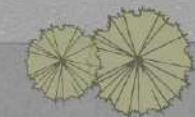
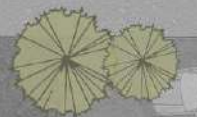
FIRST FLOOR / SHOPS



9.00 MT WIDE APPROACHED ROAD

MAIN GATE-02

MAIN GATE-01



DRIVE WAY

DRIVE WAY

6.00 MT. WIDE ROAD

18.00 MTR. WIDE ROAD

4'-0" WIDE OTTA

4'-0" WIDE OTTA

OPEN TERRACE

OPEN TERRACE

OPEN TERRACE

EXIT RAMP

JOGGING TRACK

JOGGING TRACK

CHILDREN PLAY AREA

GARDEN

CLUB HOUSE

JOGGING TRACK

JOGGING TRACK

TYPICAL FLOOR PLAN

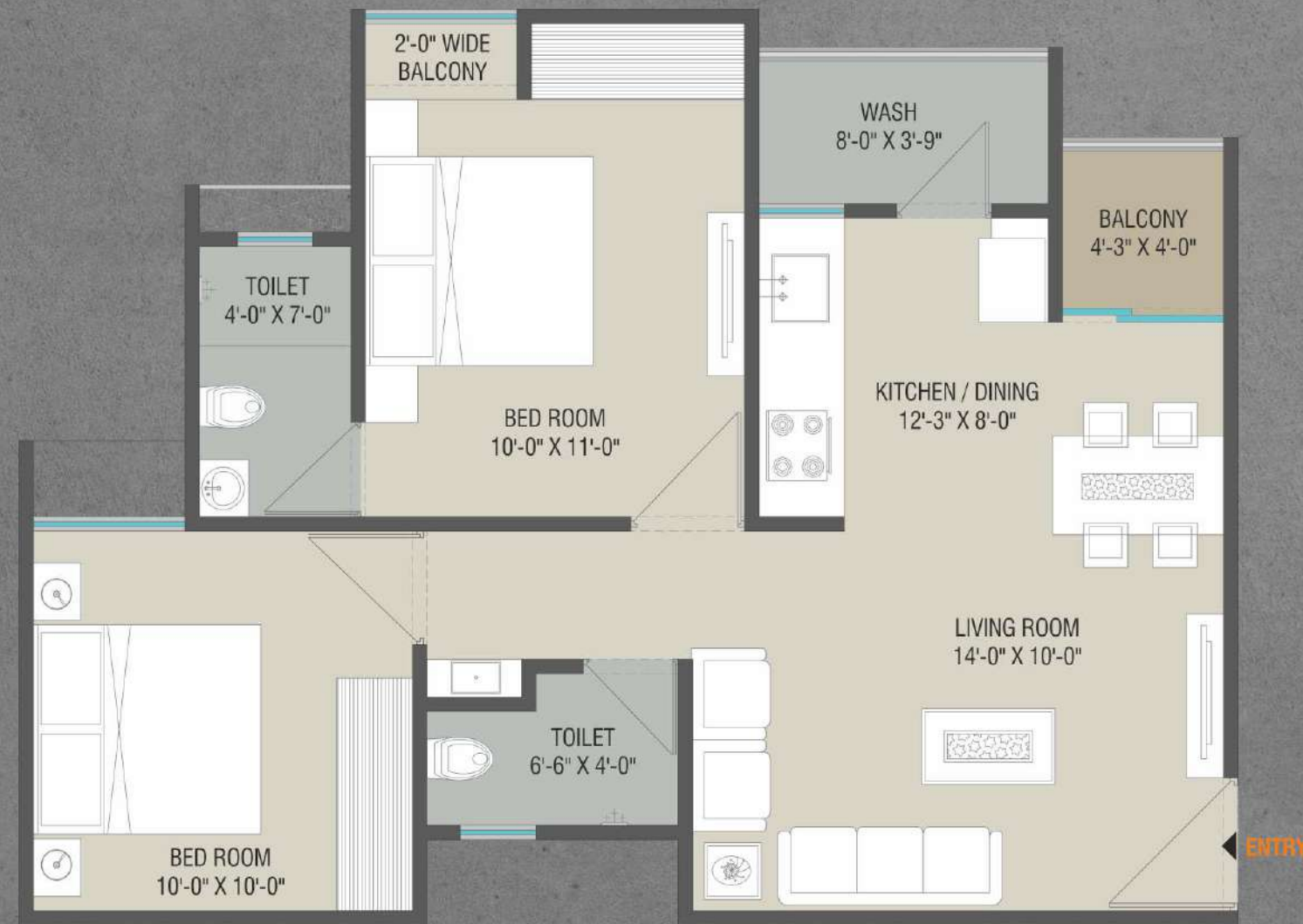


YOUR OWN
BEAUTIFUL HAVEN

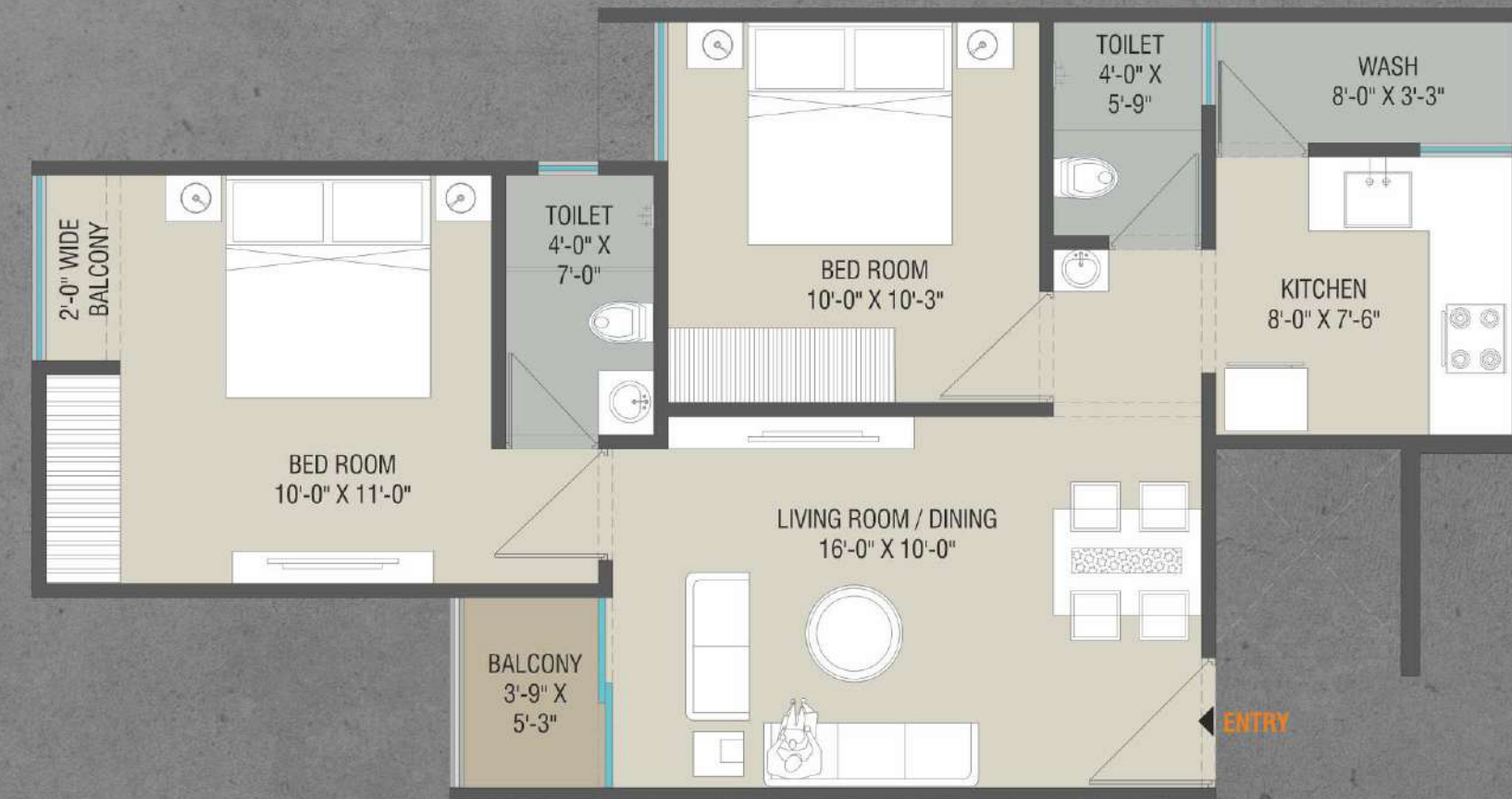
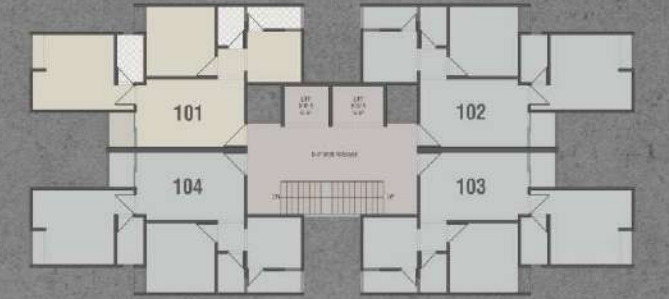
Seven Sky is a home that fits your budget and exceeds your expectations. It is where like-minded families come together and carve an exceptionally pleasant world that you'd love to be a part of.



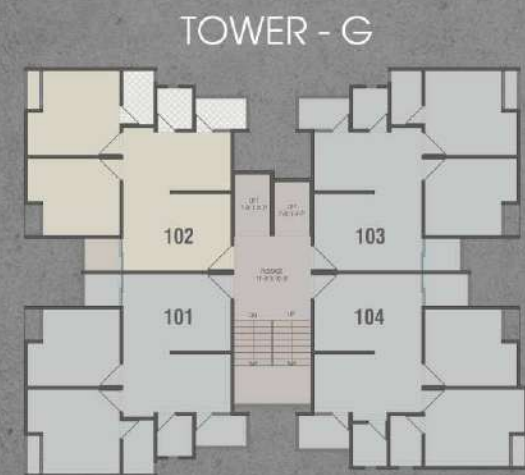
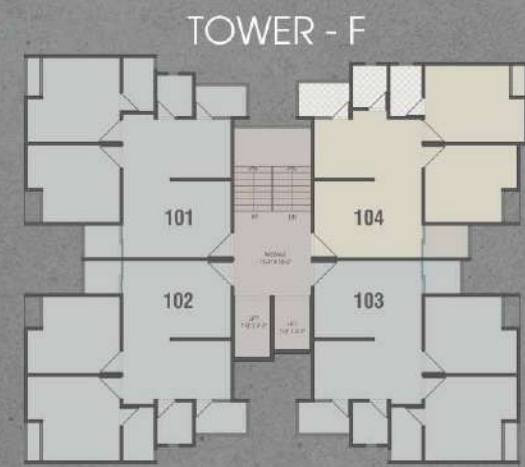
UNIT PLAN / TOWER - A, B & C



UNIT PLAN / TOWER - D & E



UNIT PLAN / TOWER - F & G



PLAY LIKE THERE'S
NO TOMORROW

The Club at Seven Sky is an exclusive one, giving you and your family the 'me' time that you always wanted. Play unlimited, relax unlimited and feel at home.



CLUB HOUSE PLAN / GROUND FLOOR



CLUB HOUSE PLAN / FIRST FLOOR



COMMON AMENITIES /

- Street lights in campus
- Parking area cover with paver block
- CCTV camera for security in premises
- Children play area
- Garden with Gazebo
- Architecture plantation
- Decorative main Entrance Gate
- 24 Hours bore water supply
- Standard quality passenger two lift with ARD system
- Number plates & Letterbox
- Fire extinguisher pipes for fire safety on each floor passage
- Automatic water level sensor system for overhead water tanks
- China mosaic in terrace





SPECIFICATION /

STRUCTURE

- All RCC & Masonry work as per structural Engineer's design
- Elevation work as per Architect design

FLOORING

- Vitrified Tiles flooring in all rooms.
- Passage area & Stair case with vitrified tiles or marble.

KITCHEN

- Granite platform with S. S. Sink
- Designer tiles above platform and upto lintel level

DOORS & WINDOWS

- Attractive entrance door with standard safety lock.
- Internal stone frame and flush door with both side oil paint.
- Aluminum windows with safety grill

BATHROOMS

- Bathroom with glazed tiles fitting up to lintel
- Standard quality sanitary ware & fittings.
- Concealed internal plumbing work
- Geyser point in all bathrooms

ELECTRIFICATION

- Concealed wiring of standard quality with TV & Fridge point.
- AC point in master bedroom

PAINT & FINISH

- Internal smooth cement plaster with good quality primer and putty.
- External double coat plaster with standard quality of paint.

KEY PLAN /



PAYMENT TERMS

SHOPS: 10% Booking | 15% within 30 days | 15% plinth level | 25% Ground floor slab | 15% masonry | 10% Plaster | 5% Flooring Level | 5% Finishing Level

FLATS: 10% Booking | 15% within 30 days | 15% Ground floor slab | 5% 1st slab to 7th slab (5% each slab) | 5% masonry | 10% Plaster level | 5% Flooring Level | 5% Finishing

DISCLAIMER : The following will be charged extra in advance / as per Government norms - (a) Stamp duty and registration charges. (b) GST (actual) or any such additional taxes if applicable in future. • if any new taxes applicable by Central or State Government in future it will be borne by the customer • Premium quality materials or equipment branded products shall be used for construction work. • Right of any changes in dimensions, design & specifications will be reserved with developer, which shall be binding for all members. • External changes are strictly not allowed. • MGVC meter deposit should be levied separate • Each member needs to pay maintenance deposits separately • In case of booking cancellation, amount will be refunded from the booking of same premises and minimum of rupees 25,000/- will be deducted from the booking amount • Extra work at the cost of client with prior estimate needs to be given in advance but no change in elevation and plan will be done • The developer reserve the full right to make any changes • This brochure does not form a part of agreement or any legal document, It is easy display of project only • Right of any changes in dimensions, design and Layout, specifications, elevation will be reserved with the developers. • Developer will not be held responsible for any delay in possession in case relevant avenues will not be provided by corporation, Madya Gujarat Vij Company (drainage, water, Light) • Jurisdiction to Vadodara.